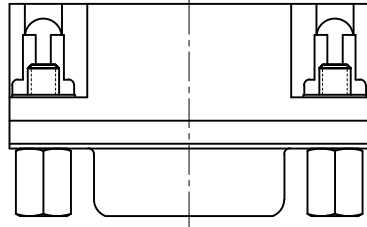
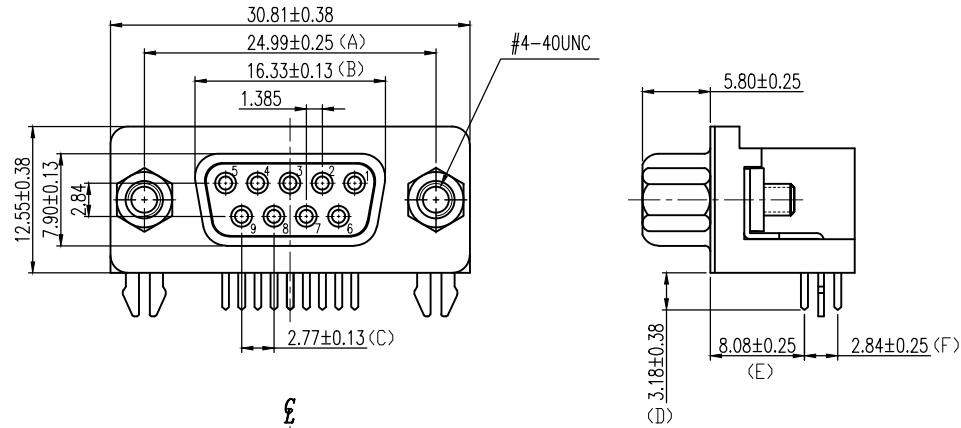


1 2 3 4 5 6 7 8

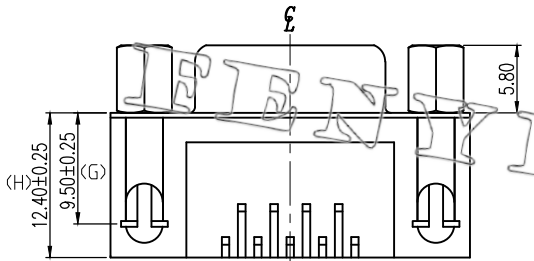
E



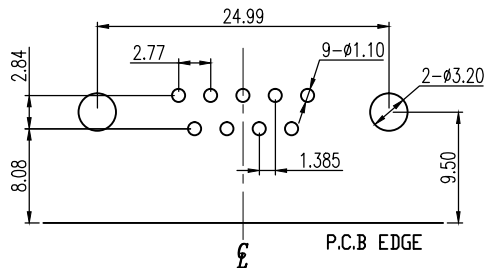
D



C



B



A

RECOMMENDED P.C.B LAYOUT  
INSPECTION DIMENSION:(A)~(H)

**SPECIFICATIONS**

1. D-SUB
- 1.1 Voltage: 250 VAC(RMS) Max.
- 1.2 Current Rating: 3 Ampere per Contact
- 1.3 Contact Resistance: 25 Milliohms Max.
- 1.4 Insulation Resistance: 5000 Megohms Min.
- 1.5 Dielectric Withstanding Voltage: 1000V AC(RMS)
- 1.6 Total Mating Force: 4.0 Kgf Max.
- 1.7 Total Unmating Force: 1.0 Kgf Min.
- 1.8 Operating Temperature: -55°C to +85°C

**NOTES**

1. MATERIAL:  
Housing:PA9T, UL 94V-0, Color:Black.  
Terminal:Copper Alloy.  
Shell:SPCC.  
Boardlock:Copper Alloy.  
Rivet:Copper Alloy.  
Screw:Copper Alloy.
2. FINISH:  
Terminal:Gold Plated over Nickel at Contact Area.  
Tin Plated over Nickel at Solder Ared.  
Shell:Tin Plated.  
Boardlock:Tin Plated.  
Rivet:Nickel Plated.  
Screw:Nickel Plated.
3. This Product is LEAD-FREE & RoHS Compliance Product.



D100XXX XXXXXXXXNO

- SERIES NO. \_\_\_\_\_
  - NUMBER OF POSITION \_\_\_\_\_
  - CONTACT STYLE \_\_\_\_\_
  - CONTACT MATERIALS \_\_\_\_\_
  - CONTACT FINISH \_\_\_\_\_
  - FRONT SHELL FINISH \_\_\_\_\_
  - BOARD MOUNTING OPTION \_\_\_\_\_
- N: IT'S COMPLIANT WITH RoHS
  - INSULATOR MATERIALS  
1: PBT  
3: PA9T
  - COLOR STYLE  
1: ALL BLACK  
2: ALL BLUE  
3: ALL GREEN
  - FLANGE MOUNTING OPTION  
1: #4-40 THREADED HOLE  
2: M3 THREADED HOLE  
3: ∅3.05mm CLEAR HOLE  
4: #4-40 THREADED SCREWLOCK CLINCHED-MOUNT INSTALLED (4.8)  
5: #4-40 THREADED SCREWLOCK CLINCHED-MOUNT INSTALLED (5.8)  
A: #4-40 THREADED HOLE WITH #4-40UNC SCREWLOCK INSTALLED (4.8x11.8)  
B: #4-40 THREADED HOLE WITH #4-40UNC SCREWLOCK BULK-PACKED (4.8x11.8)  
E: #4-40 THREADED HOLE WITH #4-40UNC SCREWLOCK INSTALLED (5.8x13.0)  
F: #4-40 THREADED HOLE WITH #4-40UNC SCREWLOCK BULK-PACKED (5.8x13.0)  
G: M3 THREADED HOLE WITH M3 SCREWLOCK INSTALLED (5.8x13.0)
- D1: 09-POSITION
  - D2: 15-POSITION
  - D3: 25-POSITION
  - D4: 37-POSITION
  - D5: 50-POSITION
  - S: SOCKET
  - P: PLUG
  - 1: BRASS
  - 2: PHOSPHOR BRONZE
  - 1: G/F BRIGHT TIN
  - 3: 15u" GOLD BRIGHT TIN
  - 4: 30u" GOLD BRIGHT TIN
  - 5: G/F FULL GOLD
  - 1: TIN
  - 2: NICKEL
  - 0: NONE
  - 1: #4-40 THREADED HOLE
  - 2: 2-FINGER BOARDLOCK
  - 4: 4-FINGER BOARDLOCK
  - 5: ∅3.05mm CLEAR HOLE

		<b>FEN YING<sup>®</sup></b>		<b>ENTERPRISES CO.,LTD</b>		
AO	An issue.			2011.10.27		
REV.	CONTENTS	DATE		Title: <u>D100 SERIES</u>		
<p>UNLESS OTHERWISE SPECIFIED TOLERANCE mm: .00 = ±0.25 .000 = ±0.13 Ang: 0.0 = ±2°</p>	Drawn	Shao Jianfeng		D-SUB 0.318"(8.08mm) FOOTPRINT, RIGHT ANGLE  File NO. C-ED-B-D100-154 Drawing NO. D100DISIX12E13NO		
	Designed	He Wei				
	Approval	Lee Jun De				
	Scale	1:1	Size			A4
	SHEET	1	Units			mm

1 2 3 4 5 6 7 8