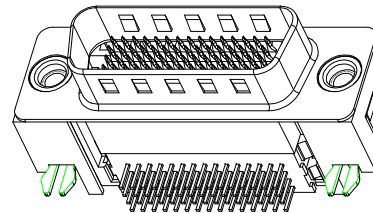
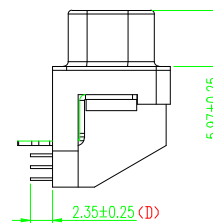


RECOMMENDED P.C.B LAYOUT
INSPECTION DIMENSION: (A)-(H)

SPECIFICATIONS

- 1.1 Voltage: 40 VAC(RMS)
- 1.2 Current Rating: 3 Ampere per Contact
- 1.3 Contact Resistance: 20 Milliohms Max.
- 1.4 Insulation Resistance: 500 Megohms Min.
- 1.5 Dielectric Withstanding Voltage: 500V DC(RMS)
- 1.6 Total Mating Force: 4.5 Kgf Max.
- 1.7 Total Unmating Force: 1.0 Kgf Min.
- 1.8 Durability: 500 cycles
- 1.9 Operating Temperature: -20°C to +80°C
- 2.0 Recommended Wave Solder: 265°C /5 sec



NOTES

1. MATERIAL:
Housing:LCP, UL 94V-0, Color:BLACK.
Latch:LCP, UL 94V-0, Color:BLACK.
Terminal:Brass(C2680).
Shell:SPCC.
Boardlock:Brass(C2680).
Rivet:Free-cutting Brass(3601).
2. FINISH:
Terminal:Selected Gold Plated in Contact Area,
100u" MIN. Tin Plated in Solder Area,
30u" MIN. Nickel Underplated Overall.
Shell:Nickel Plating 80u" min. Over Cu 50u" min.
Boardlock:Tin Plated 100u" MIN, Over Nickel 30u" MIN.
Rivet:Nickel Plated 60u" MIN, Overall.
3. This Product is LEAD-FREE & RoHS Compliance Product.

SERIES NO.	DMS3XXX 2XXXXXXN0
NUMBER OF POSITION	58: SHIELDED HOLE 48 AND 58 59: SHIELDED HOLE 58 60: 60-POSITION
CONTACT STYLE	P: PLUG
CONTACT MATERIALS	1: BRASS
CONTACT FINISH	1: G/F GOLD BRIGHT TIN 3: 15u" GOLD BRIGHT TIN 4: 30u" GOLD BRIGHT TIN
FRONT SHELL FINISH	2: NICKEL
INSULATOR MATERIALS	N: IT'S COMPLIANT WITH RoHS 2: LCP
COLOR STYLE	1: ALL BLACK 4: ALL IVORY
FLANGE MOUNTING OPTION	2: M3 THREADED HOLE 3: Ø3.05mm CLEAR HOLE Y: 40 THREADED HOLE WITH M3 & #4-40UNC SCREWLOCK INSTALLED (5.0x11.0) W: M3 THREADED HOLE WITH M3 & #4-40UNC SCREWLOCK BULK-PACKED (5.0x11.0)
BOARD MOUNTING OPTION	2: 2-FINGER BOARDLOCK

FEN YING®			ENTERPRISES CO.,LTD		
A0	An issue.	2015.04.20	Title: DMS3 SERIES		
REV.	CONTENTS	DATE	1.27mm PITCH LFH MATRIX 50, 60 CIRCUIT, PLUG ANGLE		
Drawn	Yang Xiang				
Designed	He Wei				
Approval	Lee Jun De				
UNLESS OTHERWISE SPECIFIED TOLERANCE mm:	Size	Size			
0.25	0.25	0.25			
0.5	0.5	0.5			
1.0	1.0	1.0			
2.0	2.0	2.0			
3.0	3.0	3.0			
4.0	4.0	4.0			
5.0	5.0	5.0			
6.0	6.0	6.0			
7.0	7.0	7.0			
8.0	8.0	8.0			
9.0	9.0	9.0			
10.0	10.0	10.0			
11.0	11.0	11.0			
12.0	12.0	12.0			
13.0	13.0	13.0			
14.0	14.0	14.0			
15.0	15.0	15.0			
16.0	16.0	16.0			
17.0	17.0	17.0			
18.0	18.0	18.0			
19.0	19.0	19.0			
20.0	20.0	20.0			
21.0	21.0	21.0			
22.0	22.0	22.0			
23.0	23.0	23.0			
24.0	24.0	24.0			
25.0	25.0	25.0			
26.0	26.0	26.0			
27.0	27.0	27.0			
28.0	28.0	28.0			
29.0	29.0	29.0			
30.0	30.0	30.0			
31.0	31.0	31.0			
32.0	32.0	32.0			
33.0	33.0	33.0			
34.0	34.0	34.0			
35.0	35.0	35.0			
36.0	36.0	36.0			
37.0	37.0	37.0			
38.0	38.0	38.0			
39.0	39.0	39.0			
40.0	40.0	40.0			
41.0	41.0	41.0			
42.0	42.0	42.0			
43.0	43.0	43.0			
44.0	44.0	44.0			
45.0	45.0	45.0			
46.0	46.0	46.0			
47.0	47.0	47.0			
48.0	48.0	48.0			
49.0	49.0	49.0			
50.0	50.0	50.0			
51.0	51.0	51.0			
52.0	52.0	52.0			
53.0	53.0	53.0			
54.0	54.0	54.0			
55.0	55.0	55.0			
56.0	56.0	56.0			
57.0	57.0	57.0			
58.0	58.0	58.0			
59.0	59.0	59.0			
60.0	60.0	60.0			
61.0	61.0	61.0			
62.0	62.0	62.0			
63.0	63.0	63.0			
64.0	64.0	64.0			
65.0	65.0	65.0			
66.0	66.0	66.0			
67.0	67.0	67.0			
68.0	68.0	68.0			
69.0	69.0	69.0			
70.0	70.0	70.0			
71.0	71.0	71.0			
72.0	72.0	72.0			
73.0	73.0	73.0			
74.0	74.0	74.0			
75.0	75.0	75.0			
76.0	76.0	76.0			
77.0	77.0	77.0			
78.0	78.0	78.0			
79.0	79.0	79.0			
80.0	80.0	80.0			
81.0	81.0	81.0			
82.0	82.0	82.0			
83.0	83.0	83.0			
84.0	84.0	84.0			
85.0	85.0	85.0			
86.0	86.0	86.0			
87.0	87.0	87.0			
88.0	88.0	88.0			
89.0	89.0	89.0			
90.0	90.0	90.0			
91.0	91.0	91.0			
92.0	92.0	92.0			
93.0	93.0	93.0			
94.0	94.0	94.0			
95.0	95.0	95.0			
96.0	96.0	96.0			
97.0	97.0	97.0			
98.0	98.0	98.0			
99.0	99.0	99.0			
100.0	100.0	100.0			